



# WILL SARGENT

H P & B K Sargent & Partners



**Will Sargent**

HP & BK Sargent & Partners

The Next Generation



**The  
future's  
bright!**

- I co-manage my family farm in Morningthorpe, South Norfolk.
- It's a mixed farm and covers approximately 2,000 acres.
- So far four generations of Sargents have farmed here.



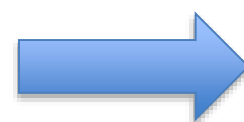


- We had a dairy herd up until the 1960s and sheep until 2002.
- We used to be Turkey farmers but switched to ducks in 2006.
- This gives us reliable, year-round cash flow.





**HP & BK Sargent & Partners**



**WAITROSE**  
& PARTNERS

- We grow combinable crops including wheat, barley, oats, rye, beans and oilseed rape.





- Our 6m Lemken combination drill couldn't handle the wet ground so our 1987 Kuhn drill was given a heavy workload.
- We also bought a 4m Claydon Hybrid drill in Autumn 2019.





- We also grow 19 hectares of Miscanthus which is burnt to produce electricity.





- Another big part of the farm is our residential rental portfolio.





## Extreme weather...







- We try to flexible with our land management methods.



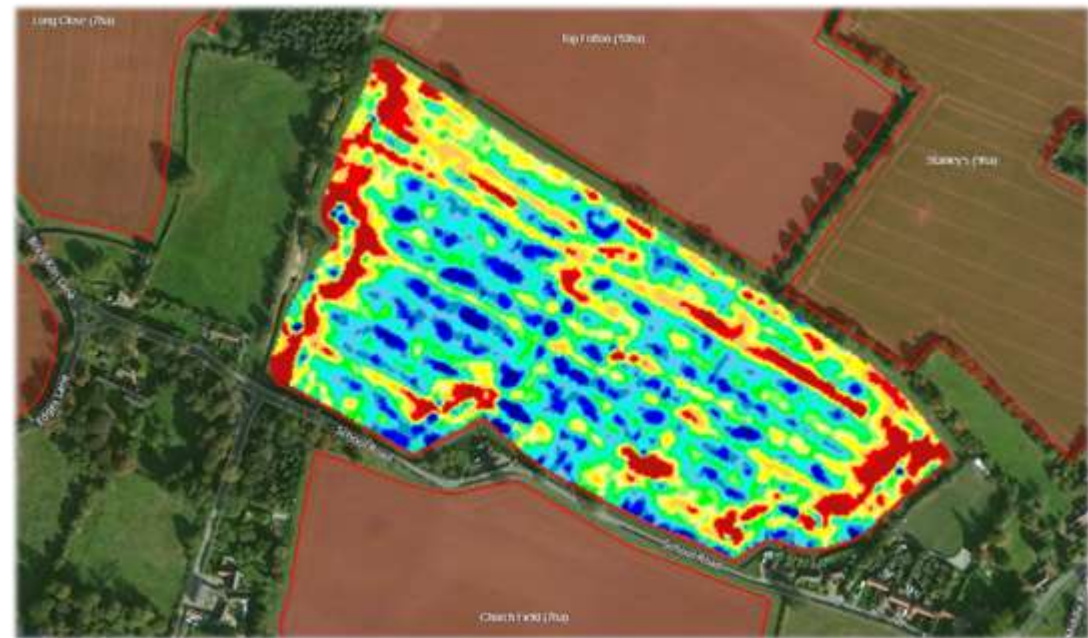
# Blackgrass







# Using data to help us farm







# The Isaria









## Life as a journalist











**Dad**



# The shooting season







**Let's  
keep  
innovating!**