



# PATRICK BEGG

Outdoors and Natural Resources  
Director, National Trust

# PAUL FORECAST

East of England Regional Director,  
National Trust

# 21<sup>st</sup> Century Farming Policy: new laws, new opportunities?





## From policy to legislation

Farming and nature is utterly interdependent, but too often in tension: it's time UK plc demanded its proper integration, for everyone's benefit

Policies are important, but transitory. Laws stick and they matter – people will respond. The clarity of the 1947 Act showed us what can be achieved.

In 2020, society wants great food. But also so much more. The new Agricultural Act that cements that broader ambition is vital. We need vellum not paper







## Conservation as a (cash) crop

Reward farmers who are doing the right thing: making woods, wetlands and grasslands. Particularly if that means more carbon is stored

Harness the latent appetite in many farmers: “Great! Another crop we didn’t know we had!”

Government needs to set out a clear, multi-annual and independently assessed funding commitment for the farming sector to complement and ‘gear’ private revenues







**New markets for land and nature**  
New Natural Infrastructure Schemes could pay for a better environment

**Natural Infrastructure Schemes in practice**  
How to create new markets for ecosystem services from land



**Protecting our assets**  
Using Natural Infrastructure Schemes to support sustainable agriculture

**New routes to decarbonise land use with Natural Infrastructure Schemes**















## New CS Scheme at Anglesey Abbey

- 143ha (under tenancy) 1% land in options in previous scheme
- 21% – in options in new CS scheme
- ~30 ha new habitat:
  - ~ 4ha - Pollen & nectar mix
  - ~1.2ha - Buffer strips (resource protection)
  - ~17ha - Cultivated plots/margins for rare arable flora
  - ~7.8ha - Winter bird mix
  - In addition, 6330m in CS hedgerow management to manage hedges in rotation rather than annually.













## New CS Scheme at Anglesey Abbey

- **EU funded project – several partners.** the National Trust + Centre for Ecology & Hydrology Soil Association + Farm Carbon Cutting Toolkit (FCCT). Three pilot region: the South West of England, Pembrokeshire and the East of England.
- **Aim:** to encourage & support farmers in their transition to more sustainable farming practices on their farms.....
- .....by encouraging uptake of methods & interventions that increase the farm's **Functional AgroBiodiversity (FAB)** & reduce reliance on chemical inputs.
- **Through implementation of targeted 'solutions':** in & around the field edge to improve pollination, pest management, soil and water quality on the farmland ('FAB Solutions')











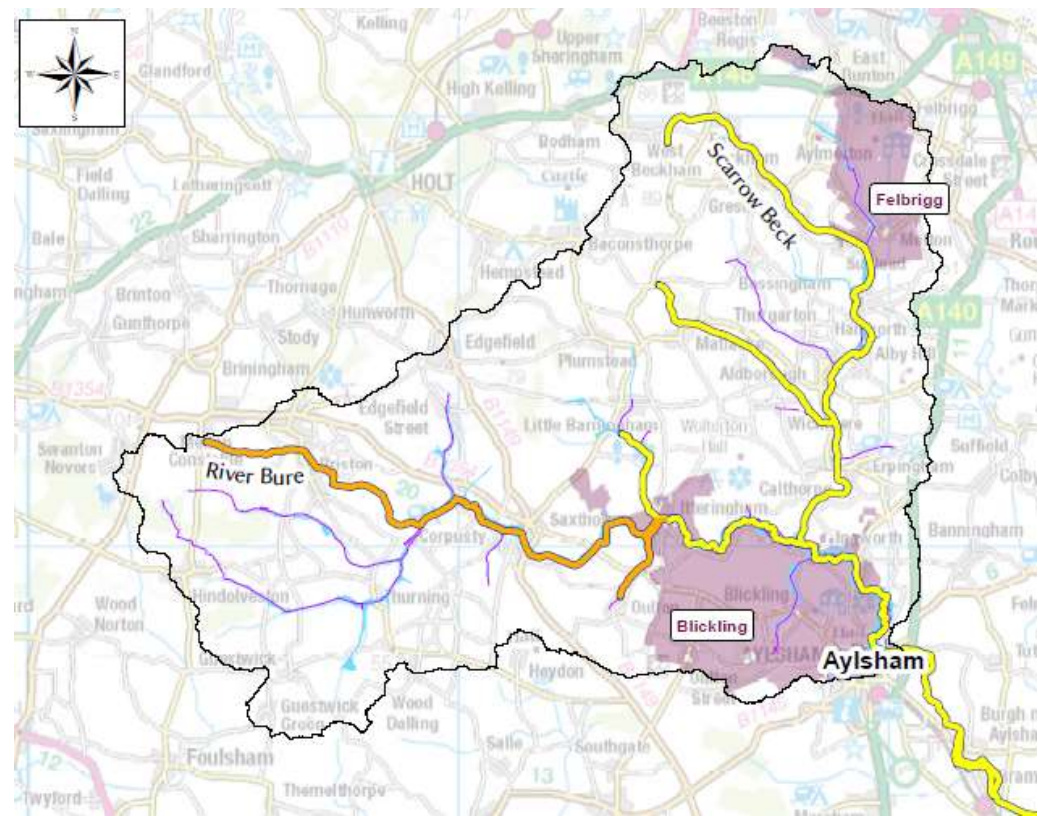
## Implementation through experimentation

We need schemes that reward outcomes and invest in collaboration

We need a bustling and no-regrets period of testing where people are given the room to experiment and even to fail if needed

Private investment can complement public money: Upper Bure Catchment trial to buy:

- Slow, filtered water
- Reduced diffuse pollution
- Reduce levels of soil erosion
- Improve biodiversity.





## Common skills and mutual benefits...

**Farmers have the skills and society needs the outcomes....**

- Rewetting floodplain fields through ditch blocking
- Creation of floristic margins
- Woodland creation
- Meadow restoration
- Farming improvements, e.g. cover crops





Measures specification for National Trust  
October 2019

### *NT01: Planting new woodland to improve water quality or reduce flood risk*

This item is for planting new native broadleaf woodland in locations that will slow the flow of surface run-off and increase infiltration.

#### **Where to use this item**

- in locations that will intercept surface run-off
- in wet or riparian areas subject to seasonal flooding
- on areas of more than 0.1ha (0.25acres)

#### **Where this item cannot be used**

- on area of existing woodland or that has been woodland in the last 5 years
- on historic or archaeological features
- on a site where woodland planting has previously been supported by a grant

#### **Requirements**

- plant 1600 stems (plants) per hectare and attach the spiral tree guard immediately after planting
- carry out work between 1 November and 31 March



A triangle of damp land newly planted with alders.

