



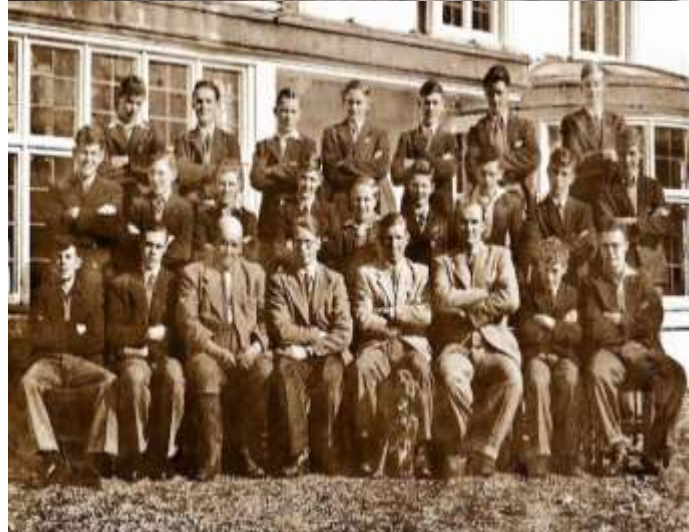
EASTON AND OTLEY COLLEGE

JANE TOWNSEND, PRINCIPAL





THE LAST 70 YEARS

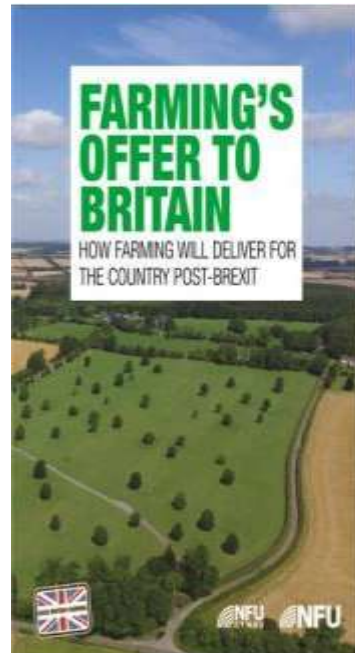




CURRENT LANDSCAPE



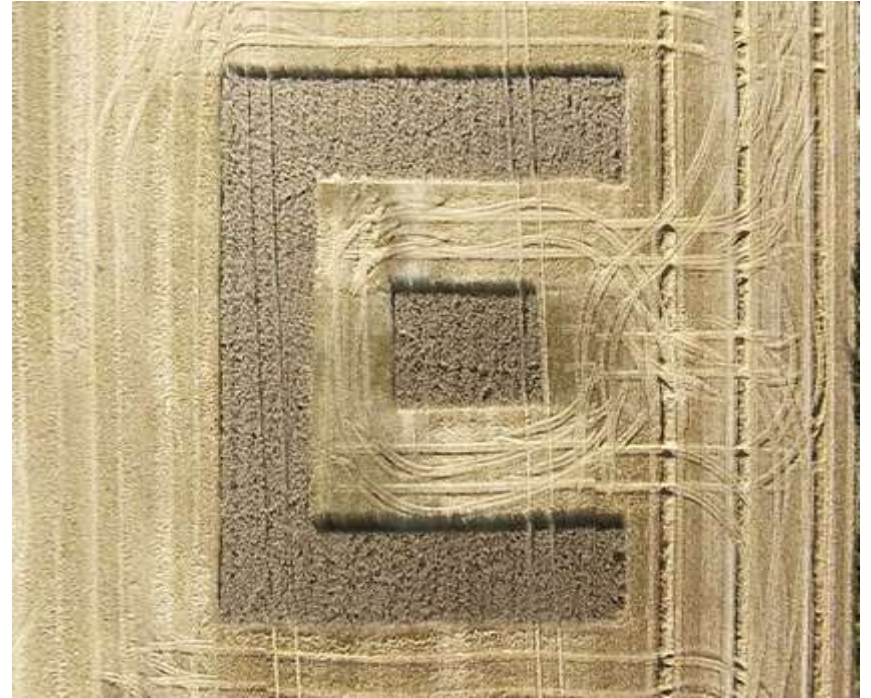
www.shutterstock.com • 734412136





A FARMING COLLEGE FOR THE FUTURE

WHAT DOES
THAT LOOK
LIKE?

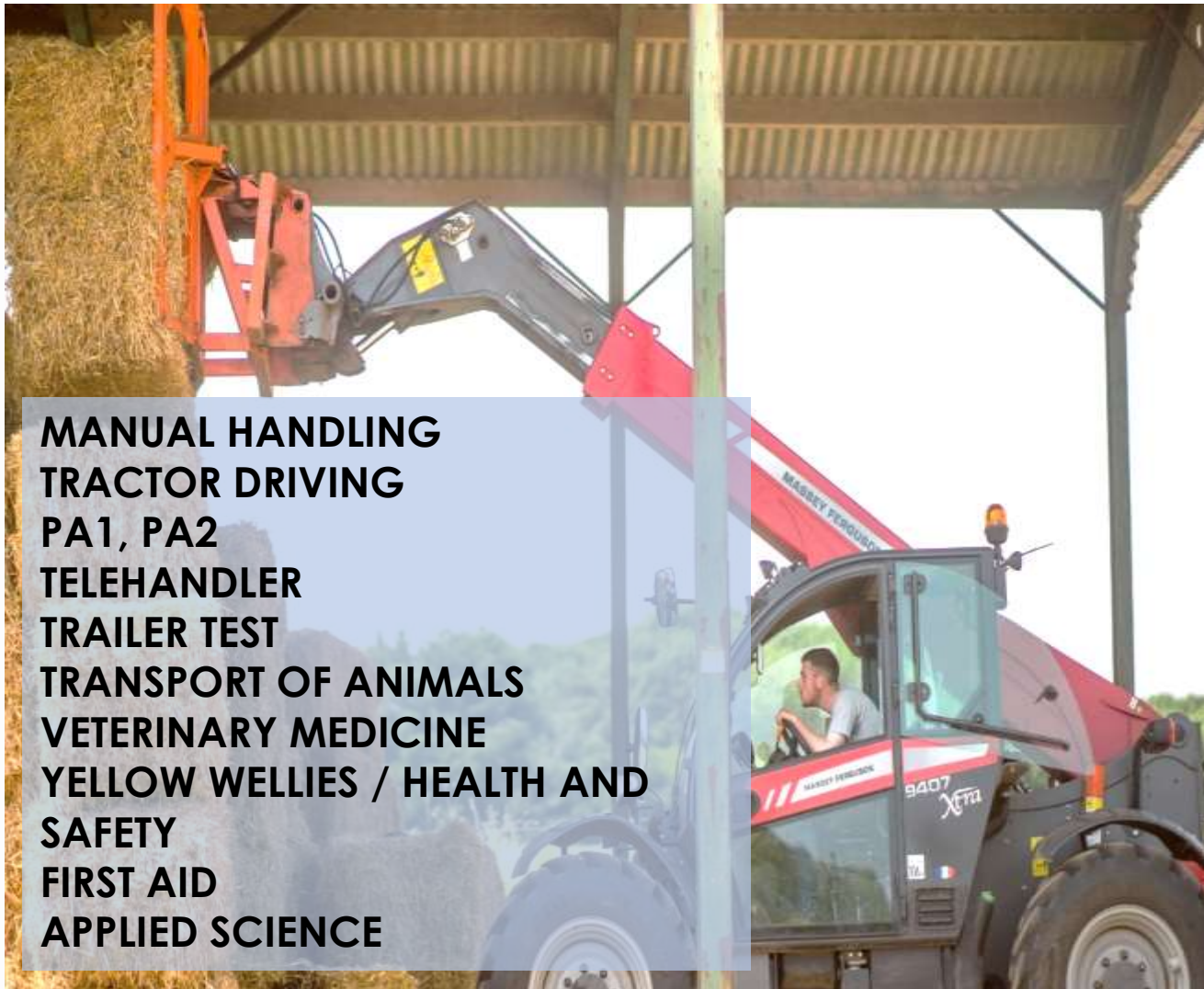




FARM READY STUDENTS



QUALIFICATIONS



MANUAL HANDLING
TRACTOR DRIVING
PA1, PA2
TELEHANDLER
TRAILER TEST
TRANSPORT OF ANIMALS
VETERINARY MEDICINE
YELLOW WELLIES / HEALTH AND
SAFETY
FIRST AID
APPLIED SCIENCE



EXPERIENCE



- LIVESTOCK KNOWLEDGE
- UNDERSTANDING OF THE JOB
- COMPETENT, KEEN AND DITCH THE PHONE
- LITERATE AND QUICK ON THE UPTAKE
- BANTER READY
- LOYALTY TO THE INDUSTRY
- TECH OPERATORS READY TO HANDLE DATA

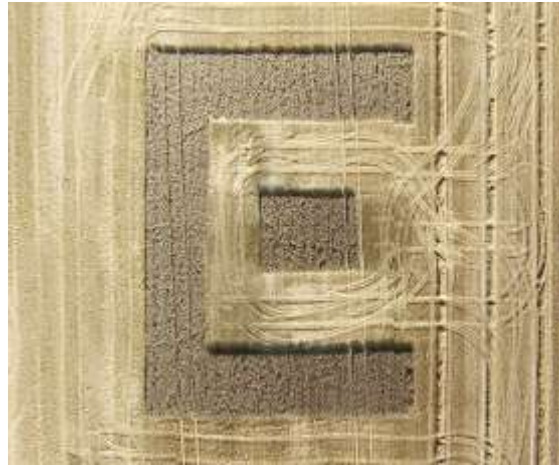
BEHAVIOURS



- DISCIPLINE
- TIME KEEPING
- ENTHUSIASM
- INTERESTED TO LEARN
- LISTENING SKILLS
- MOTIVATION
- COMMON SENSE
- GOOD ATTITUDE



INNOVATION - COLLABORATION – TRANSFORMATION



**INDUSTRY + EDUCATION = FARM READY
STUDENTS**